

Lähtötilanteen analyysi (Community assessment)



ENGLISH (EN)

GLOBAL GRANTS COMMUNITY ASSESSMENT RESULTS

Use this form to report community assessment findings to The Rotary Foundation when you apply for a global grant.

Assessing the strengths, weaknesses, needs, and assets of the community you plan to help is an essential first step in designing an effective and sustainable global grant project. See [Community Assessment Tools](#) for full instructions and helpful tips.

This form will help you report the results of your community assessment, and it's required when you apply for any humanitarian or vocational training team grant. Complete a separate form for each beneficiary community (e.g., school, healthcare system, or village), using information that is both current and specific to each community. Remember, you can't use global grant funds to cover the cost of doing an assessment, but you can use district grantfunds.

Beneficiary community or institution

Institution : Ashwin Medical Foundation Moraya Multispeciality Hospital Chinchwad, Pune – 411 033 . Community : More than 30 Lacs Population in & around Pimpri Chinchwad area.

Groups in the community that would receive a clear, direct, and immediate benefit from the project

Medical, Surgical & Road Accident victims require immediate CT Scan Facility. There are currently 4/5 such cases daily. On setting of the facility equal number of additional beneficiaries are expected to avail this low cost life saving facility. The Charges are not affordable in other hospitals & Centres. Moraya Hospital will keep affordable charges less than other centres.

Beneficiaries' demographic information, if relevant to the project

The PCMC area of Pune has a population of 3 million. As it is a large industrial part of the city, there are slums and large number of people who are below poverty line. The hospital itself has as OPD of 50000 patients per annum and an IPD of 35000.

Who conducted the assessment? (check all that apply)

- Host sponsor members
- International sponsor members
- A cooperating organization
- University
- Hospital
- Local government
- Other [Click or tap here to enter text.](#)

Assessment dates

Three meetings with the doctors of the beneficiary organization along with the president of the Indian medical Association PCMC branch, December 2018

What methods did you use? (check all that apply)

- Survey
- Community meeting
- Interview
- Focus group
- Asset inventory
- Community mapping
- Other : ary & Ethical Community of Charitable Trust.

Who from the community participated in the assessment?

The patient population of the hospital participated in the assessment done by Advisory & Ethical Committee of the Charitable Trust.

Keskittämisaalueet



rauhan rakentaminen ja konfliktien ehkäisy



sairauksien ehkäisy ja hoito



vesi, sanitaatio ja hygienia



äidin ja lapsen terveys

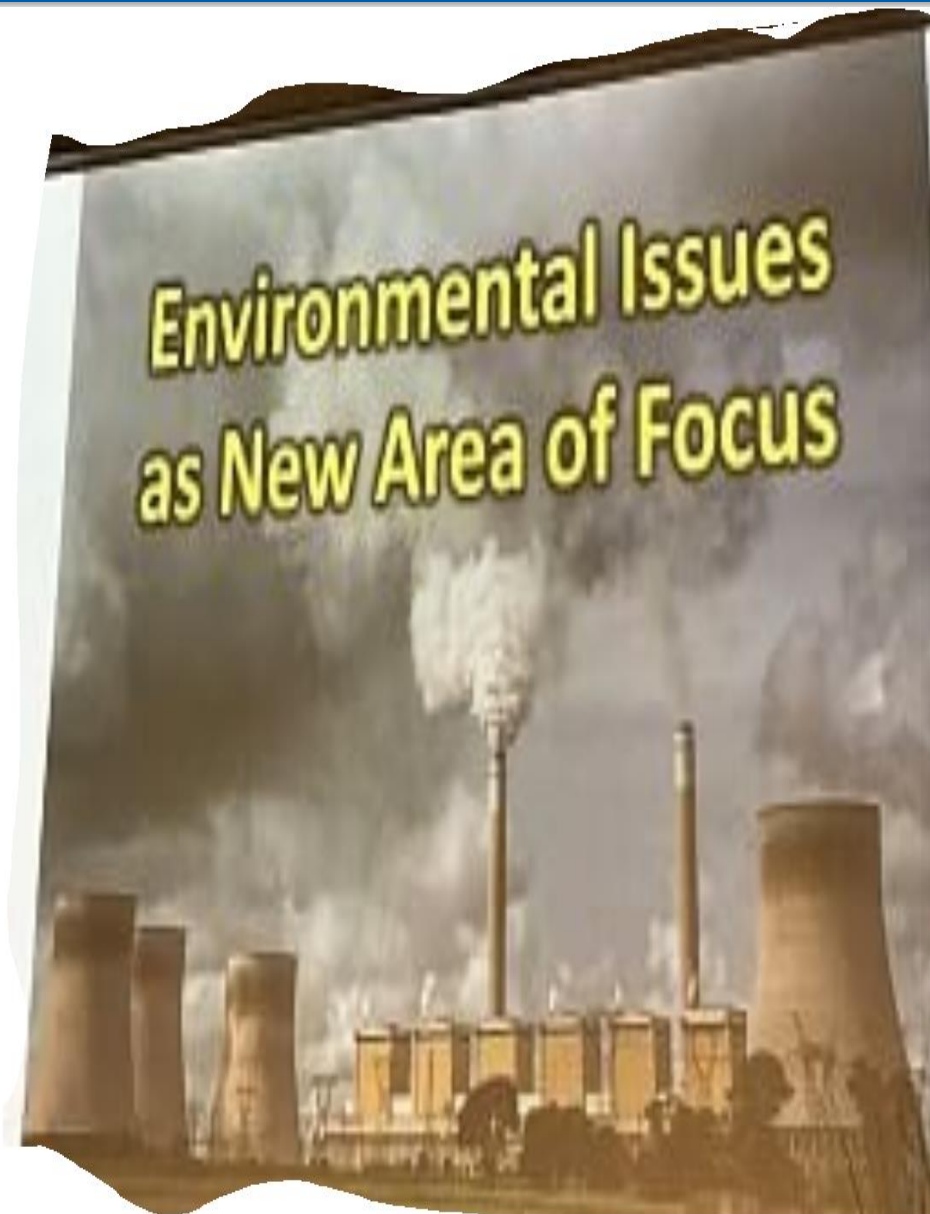


peruskoulutus ja lukutaito



yhteisöjen taloudellinen kehittäminen

Ympäristöasiat, uusi pääpainoalue



Global Grantin kestävät tulokset

SUSTAINABILITY

For Rotary, sustainability means providing long-term solutions to community problems that community members themselves can support after the grant funding ends.

Start with the community

Identify a need and develop a solution that builds on community strengths and aligns with local values and culture.

Lähtötilanteen analyysi / Community assessment



ENGLISH (EN)

GLOBAL GRANTS COMMUNITY ASSESSMENT RESULTS

Use this form to report community assessment findings to The Rotary Foundation when you apply for a global grant.

Assessing the strengths, weaknesses, needs, and assets of the community you plan to help is an essential first step in designing an effective and sustainable global grant project. See [Community Assessment Tools](#) for full instructions and helpful tips.

This form will help you report the results of your community assessment, and it's required when you apply for any humanitarian or vocational training team grant. Complete a separate form for each beneficiary community (e.g., school, health care system, or village), using information that is both current and specific to each community. Remember, you can't use global grant funds to cover the cost of doing an assessment, but you can use district grant funds.

Beneficiary community or institution

Click or tap here to enter text.

Groups in the community that would receive a clear, direct, and immediate benefit from the project

Click or tap here to enter text.

Beneficiaries' demographic information, if relevant to the project



Provide training

A project's success depends on people.

technology from local sources.



Find local funding

Get local funding through governments, hospitals, companies, and other organizations.



Success

Measurable project outcomes will collect your data.



Kestävät tulokset

- yhteisölähtöisyys
- paikallinen omistajuus
- koulutus
- paikalliset hankinnat
- paikallista rahoitusta
- mitattavat tulokset

SUSTAINABILITY

For Rotary, sustainability means providing long-term solutions to community problems that community members themselves can support after the grant funding ends.



Start with the community

Identify a need and develop a solution that builds on community strengths and aligns with local values and culture.

Encourage local ownership

Identify key community members who can help pioneer lasting improvements.



Provide training

A project's success depends on people.

Buy local

Purchase equipment and technology from local sources.



Find local funding

Get local funding through governments, hospitals, companies, and other organizations.

Measure your success

Develop clear and measurable project outcomes and determine how you will collect your data.



Budjetoinnin perusteet (Global Grants)

Tehokas rahoituksen vipuvarsi Maailmanrahaston avulla

- DDF toteuttajapiiriltä
- DDF muulta piiriltä
- (mahdollisesti) ”käteistä” toteuttajaklubilta
- (mahdollisesti) ”käteistä” muilta klubeilta
- rahaa mahdollisilta muilta lahjoittajilta (esim. CSR)

- Maailmanrahaston kahdennus:
 - DDF-osuuksiin 100 %
 - ”käteisosuuksiin” 50 %
- Maailmanrahaston osuuden oltava kaikkiaan $\geq 15\ 000$ \$



Polion hävittäminen on Rotaryn prioriteetti no. 1!

Global Polio Eradication Initiative

POLIO GLOBAL
ERADICATION
INITIATIVE

Global Polio Eradication Initiative
World Health Organization
Avenue Appia 20,
1211 Geneva 27
Switzerland

[DONATE](#)
[ACRONYMS](#)
[TERMS OF USE](#)
[SITEMAP](#)
[CONTACT](#)

EVERY
LAST CHILD 
CHILD 

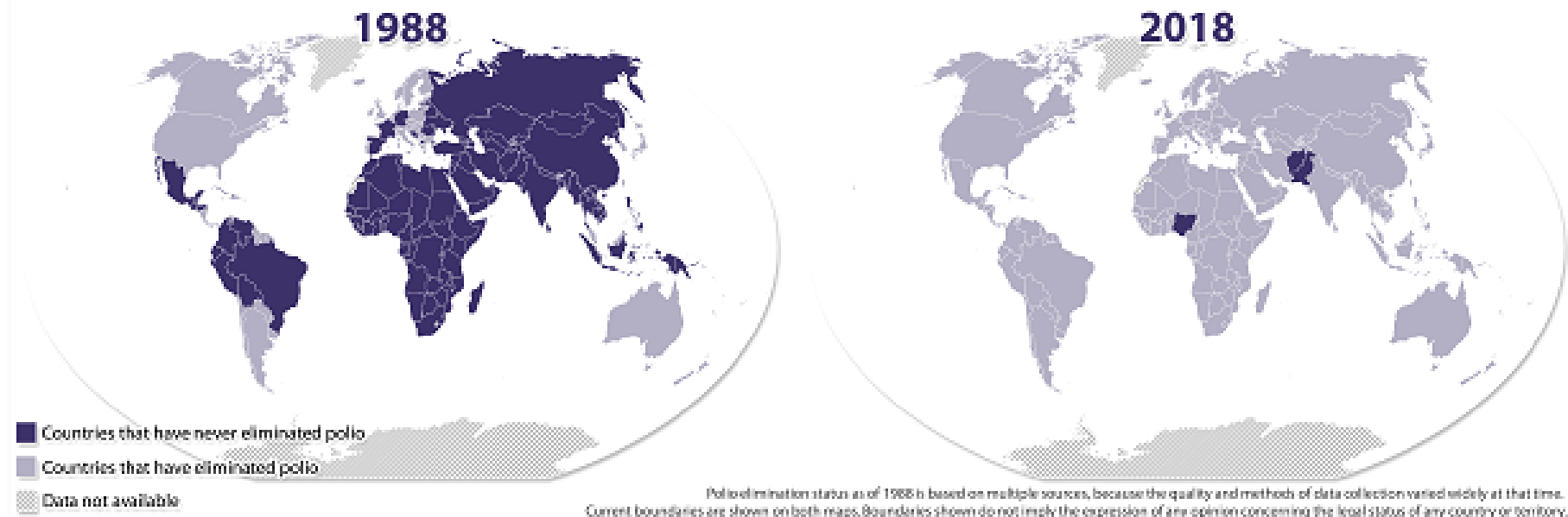


BILL & MELINDA
GATES foundation



125 maata -> 2 maata, Pakistan ja Afganistan

Our Progress Against Polio



[View Larger](#)

Mitä tekemistä meillä rotareilla vielä on



- tuemme kampanjaa lahjoituksin ja keräyksin
- Bill ja Melinda Gatesin säätiö 3-kertaistaa rotarien PolioPlus-lahjoitukset
- myös piirejä on kehoitettu käyttämään DDF-varojaan tähän
- **kerrotaan poliosta**

Lahjoitukset Säätiölle 31.1.2020

| Donations to TRF as of 31.01.2020 | | | | | | | | |
|-----------------------------------|--------------|-------------|---------------|------------|-------|----------------|--------|--|
| District | Members July | Annual Fund | AF per capita | Polio fund | Other | Endowment Fund | Total | |
| 1380 | 858 | 927 | 1,08 | 1085 | | 0 | 2012 | |
| 1390 | 1756 | 10308 | 5,87 | 1763 | 2111 | 0 | 14182 | |
| 1400 | 925 | 9998 | 10,81 | 5147 | 8925 | 0 | 24070 | |
| 1410 | 2058 | 11809 | 5,74 | 1564 | | 0 | 13373 | |
| 1420 | 2698 | 4419 | 1,64 | 29185 | | 0 | 33604 | |
| 1430 | 1139 | 8084 | 7,10 | 11434 | | 0 | 19518 | |
| Together | 9434 | 45545 | 4,83 | 50178 | 11036 | 0 | 106759 | |



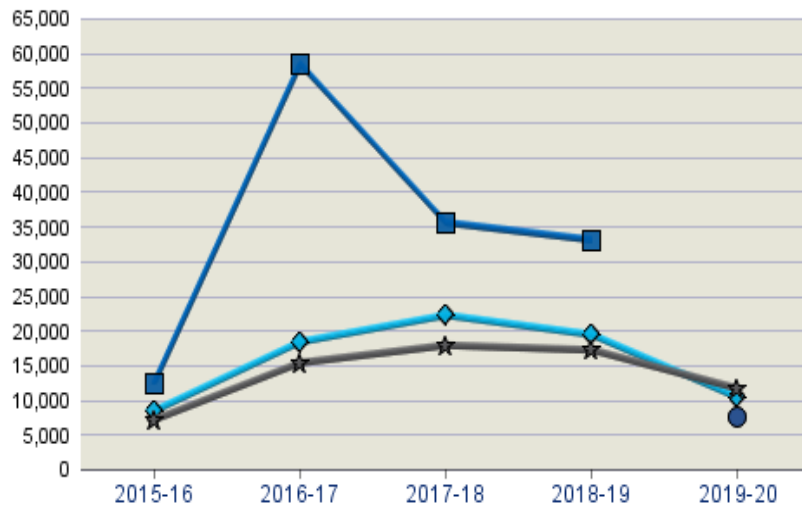
DISTRICT 1390 FUNDRAISING ANALYSIS

INTERIM RESULTS FOR JULY THROUGH FEBRUARY 2019-20

| | Number of Members | Annual Fund | | | | | | PolioPlus Fund | | | | | Other Funds** | Endowment Fund | Total Giving |
|---------|-------------------|-------------|------------------|----------|------------|---------------|------------------|----------------|------------------|----------|---------------|------------------|---------------|----------------|--------------|
| | | Goal | % Goals Received | Total | Per Capita | Goal Achieved | Non-Giving Clubs | Goal | % Goals Received | Total | Goal Achieved | Non-Giving Clubs | Total | Total | |
| 2019-20 | 1,756 | \$11,644 | 18.9% | \$10,363 | \$5.90 | 89.0% | 36 | \$3,033 | 9.4% | \$1,763 | 58.1% | 48 | \$2,111 | \$0 | \$14,237 |
| 2018-19 | 1,860 | \$17,185 | 20.4% | \$33,057 | \$17.77 | 192.4% | 24 | \$4,350 | 11.1% | \$9,549 | 219.5% | 43 | \$0 | \$0 | \$42,606 |
| 2017-18 | 1,943 | \$17,850 | 32.7% | \$35,539 | \$18.29 | 199.1% | 29 | \$6,505 | 20.0% | \$8,441 | 129.8% | 48 | \$0 | \$22,628 | \$66,608 |
| 2016-17 | 2,023 | \$15,340 | 17.9% | \$58,427 | \$28.88 | 380.9% | 18 | \$6,900 | 10.7% | \$10,545 | 152.8% | 43 | \$0 | \$1,000 | \$69,971 |
| 2015-16 | 2,103 | \$7,140 | 12.3% | \$12,511 | \$5.95 | 175.2% | 40 | \$1,500 | 5.3% | \$11,330 | 755.3% | 39 | \$0 | \$0 | \$23,841 |

**Other Funds include term/directed gifts and funds for approved grants.

Annual Fund Measures



Year to Date (YTD) covers the period from July through February.

Recognition and Endowment Measures

| | PHF | Bene-factor | Bequest Society* | Major Donor* | Major Gifts | EREY Eligible | Sustaining Member | PHS Eligible |
|----------|-------|-------------|------------------|--------------|-------------|---------------|-------------------|--------------|
| All-time | 1,876 | 6 | 1 | 6 | -- | -- | -- | -- |
| 2019-20 | 17 | 0 | 0 | 0 | 0 | 16 | 10 | 2 |
| 2018-19 | 59 | 0 | 0 | 0 | 0 | 32 | 14 | 6 |
| 2017-18 | 61 | 3 | 0 | 4 | 2 | 26 | 20 | 6 |
| 2016-17 | 44 | 2 | 1 | 0 | 0 | 386 | 21 | 6 |
| 2015-16 | 52 | 0 | 0 | 0 | 0 | 9 | 9 | 3 |

Yearly breakdowns include both new qualifiers and recognition level changes

Paul Harris Society Members: 7 Rotary Direct Participants: 4

Total Endowed Funds:

Market Value:

Market Value Date:

Foundation Recognition Points: 174,457.53

* Joint Major Donor/Bequest Society counts as one.

EREY (USD 25 starting in 2016-17), Sustaining Member, and PHS Eligible includes all individuals, not just active club members.



Miten voin itse tukea Rotarysäätiötä?

- joko Rotarysäätiön pankkitilille SEPA-maksuna (Matrikkelin 2019-20 siniset sivut: SIVU 25)
- tai My Rotaryn kautta luottokortilla
- klubi voi suorittaa maksun jonkun rotarin nimissä, vaikka jokaisen jäsenen
- mikä tahansa summa vuosirahastoon = EREY
- ≥ 100 \$ = Sustaining Member = kannatusjäsen
- 1000 \$ / vuosi = Paul Harris Societyn jäsen



KLUBIN MENESTYKSEN SYKLI

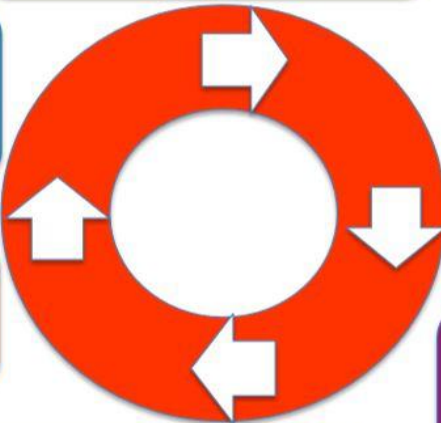
KLUBIN MENESTYKSEN SYKLI

**ELÄVÄINEN ROTARY
KLUBI:
SERVICE ABOVE
SELF**

**UUDET
INNOVAATIOT JA
TOIMINNAT**

**LAHJOITUKSET
TRF-VUOSI-
RAHASTOON
SHARE**

JÄSENLISÄYS



**GLOBALIT JA
PIIRIAPURAHAT
PROJEKTIT**

**PROJEKTEILLA
JULKISUUTTA**

**Giving is
Love**

Prioriteetti No 1: Käyttääkää hyväksi DDF-

1st Priority : Polio



2nd Priority :
Utilize DDF fully

1:1 Match by World Fund

1:2 Match by Gates Foundation

Yielding 1:6 Match in Total

Rotary Forumissa Triplassa 1-2.2.2020



The
Rotary
Foundation

