



# Development of Rail Baltica Project

Timo Riihimäki, Suomalais-Eestiläinen Kauppayhdistys, 3.10.2015



Co-financed by the European Union  
Connecting Europe Facility

# The idea of Rail Baltica goes back 25 years



# INTERGOVERNMENTAL AGREEMENT

2017

Estonia, Latvia and  
Lithuania Parliaments  
ratified Rail Baltica  
Inter-governmental  
agreement  
By October 2017

Fully integrate the Baltic States and  
their capitals into the European  
Union  
railway system and the trans-  
European transport network (TEN-T)



# European Commission's implementing decision in October 2018

## North Sea-Baltic Core Network Corridor

- ◉ Rail Baltica recognized as part of the EU dual use/military mobility infrastructure
- ◉ Finland invited join the Joint Venture RB Rail AS in official capacity in December 2018



# Organization Structure/Project Governance



**RAIL BALTICA TASK FORCE**

		Latvijas Republikas Satiksmes ministrija		Lietuvos Respublikos susisiekimo ministerija		<b>Catherine Trautmann</b> EU Coordinator North-Sea Baltic TENT-T Corridor
--	--	--	--	--	--	---

**BENEFICIARIES**

		Latvijas Republikas Satiksmes ministrija		Lietuvos Respublikos susisiekimo ministerija
--	--	--	--	--

**RB RAIL SHAREHOLDERS 1/3**

--	--	--

**SUPERVISORY BOARD**

--	--	--	--	--	--

**MANAGEMENT BOARD**

--	--	--

**JV RB Rail**

Team of 76+ people in 3 Baltic states



**National Implementing bodies**




# Rail Baltica Route



-  7 railway passenger stations with potential regional stations
-  3 multimodal terminals
-  Connections to airports and sea ports

# European added value megaproject



Reduction of CO<sub>2</sub> emissions



Removing bottlenecks



Bridging missing link



Safety and Security



Innovation and Digitalisation opportunities





# How much does Rail Baltica cost?

Total CAPEX = 5.8 bln €

State financing

1.2 bln €



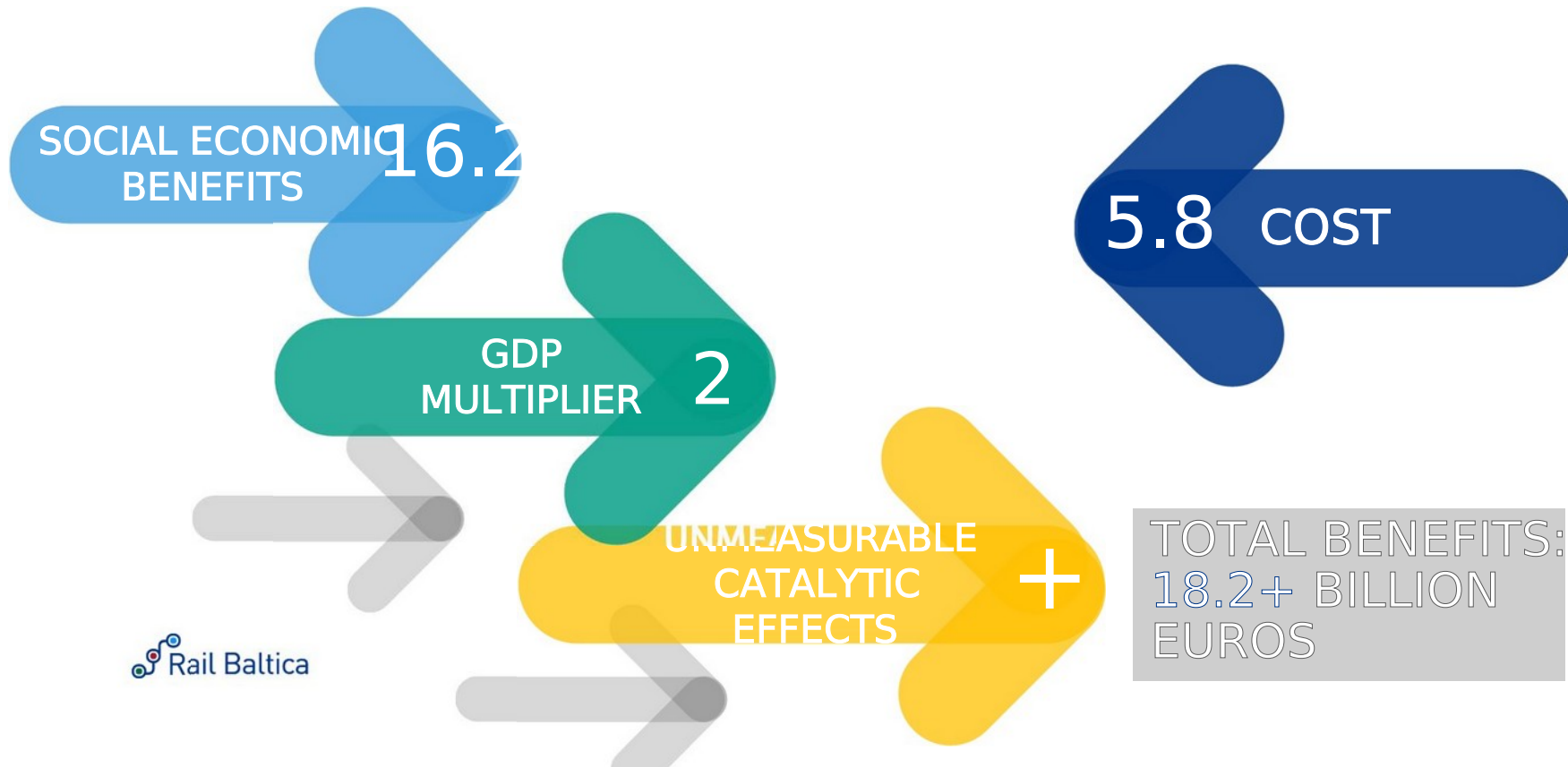
EU co-financing

4.6 bln €

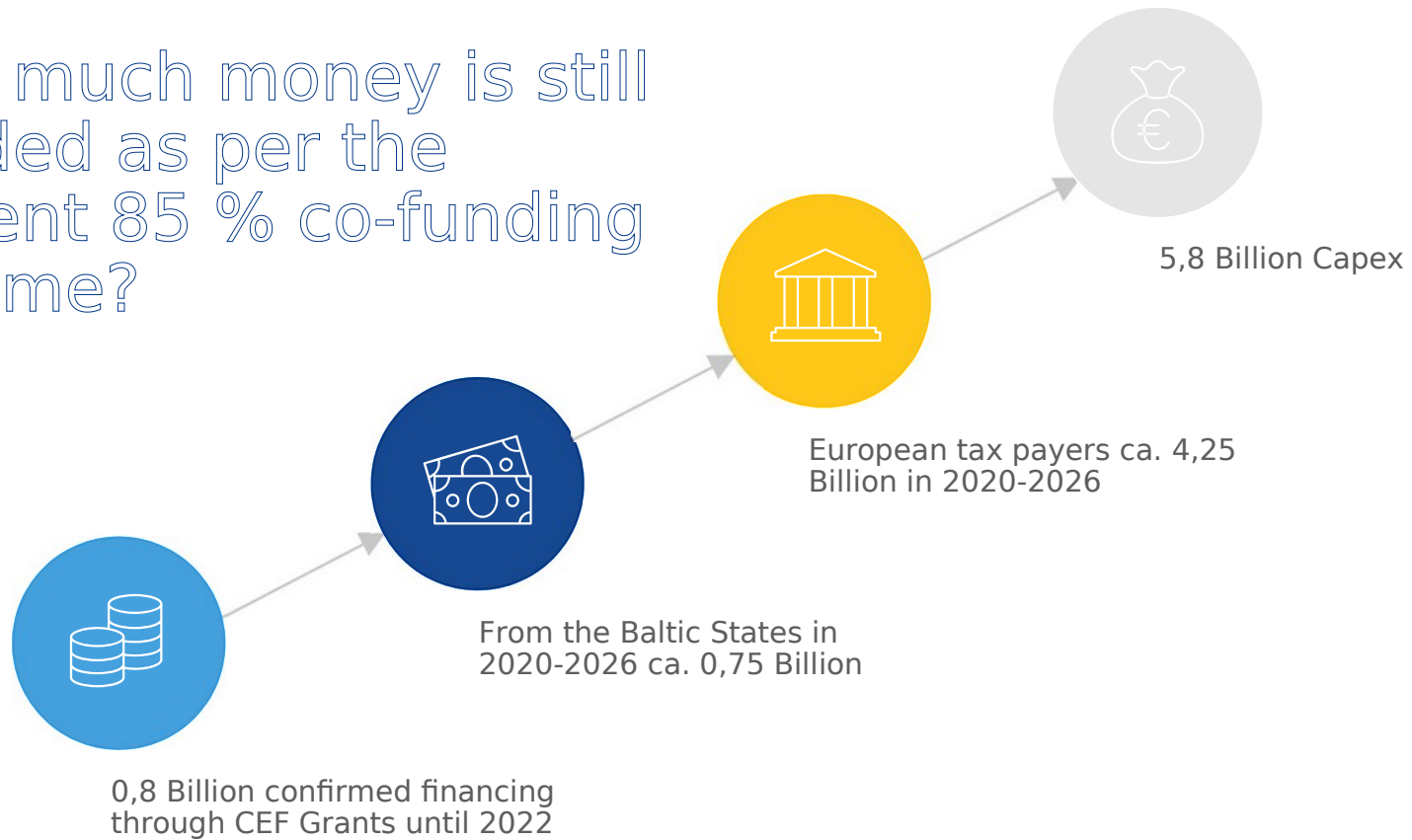


# Benefits vs Cost

Bln EUR



How much money is still needed as per the current 85 % co-funding scheme?





# Project technical parameters

Total Line Length

870 km of which:  
• 213 km in Estonia  
• 265 km in Latvia  
• 392 km in Lithuania

Design Speed

• 249 km/h for passenger trains  
• 120 km/h for freight trains

Standard Gauge

1435 mm

Double-track Electrified

2x25kVAC

Axle Load

25 t

Traffic Management

ERTMS L2

Max. Freight Train Length

1050 m

## Key priorities in 2019



Detailed Technical  
Designs

Land acquisition



Joint Venture &  
Global Project  
Financing

6 Audits  
Governance



Infrastructure Management  
model

Building information model



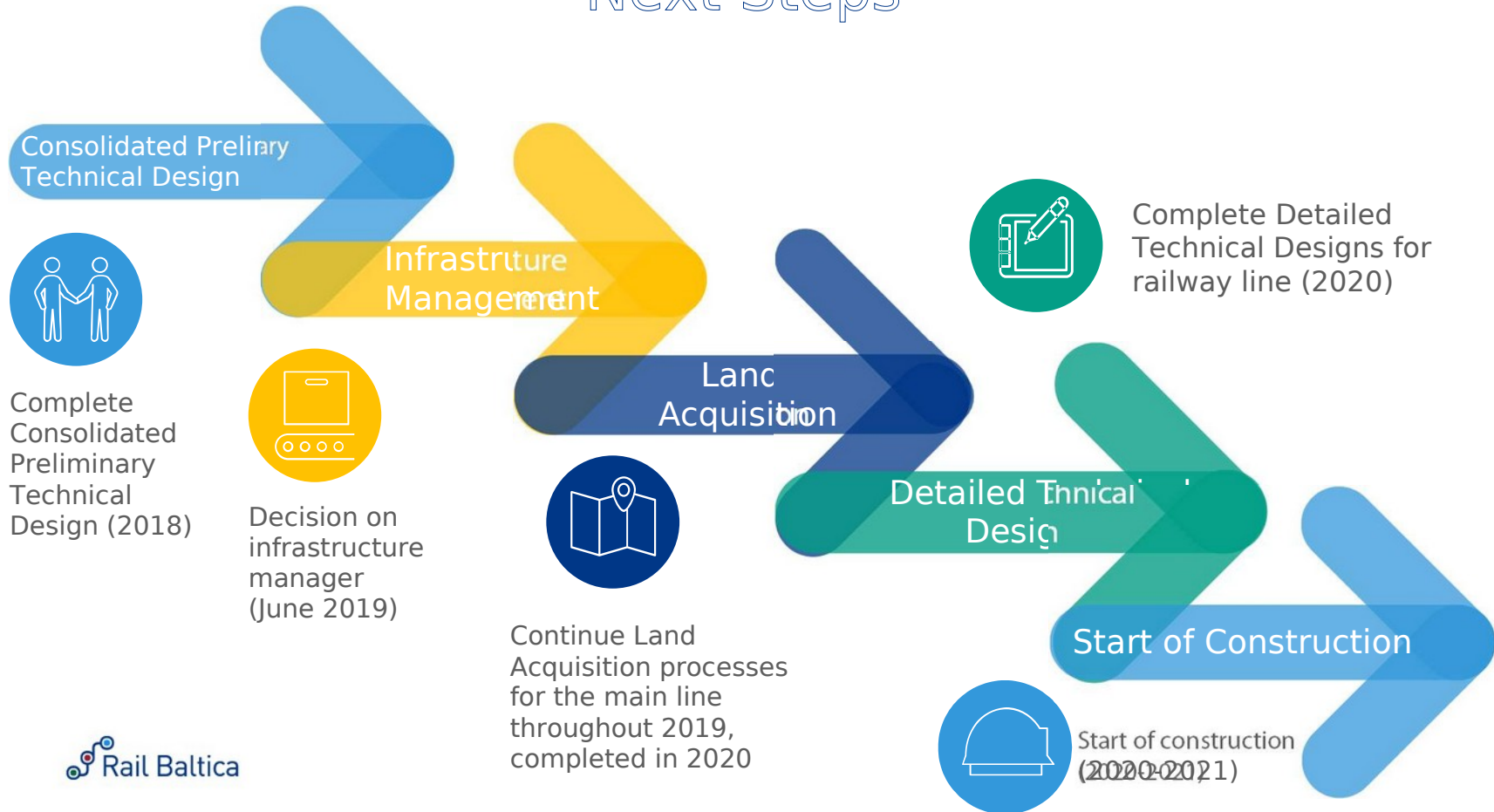
Cooperation with  
Poland and  
Finland

Military mobility



Local facilities  
development

# Next Steps





- Design works and site investigations have already started on 411 km of the Rail Baltica line
- 6 design contracts in total signed
- DTD services provided by IDOM, INECO, Egis, DB Engineering, Olymps
- 3 inception reports delivered
- Steering committees established in each country including BENs and IBs
- 3 ongoing procurements - 2 sections in Latvia and 1 in Estonia
- 9 out of 11 designs to begin in 2020, constituting 75% of the main line
- No claims regarding procurement

# Detailed Technical Design in Estonia



## Sections:

-  Tallinn to Rapla
-  Rapla to Pärnu
-  Pärnu to Estonian/Latvian border

## Indicative scope of works:



15  
bridges



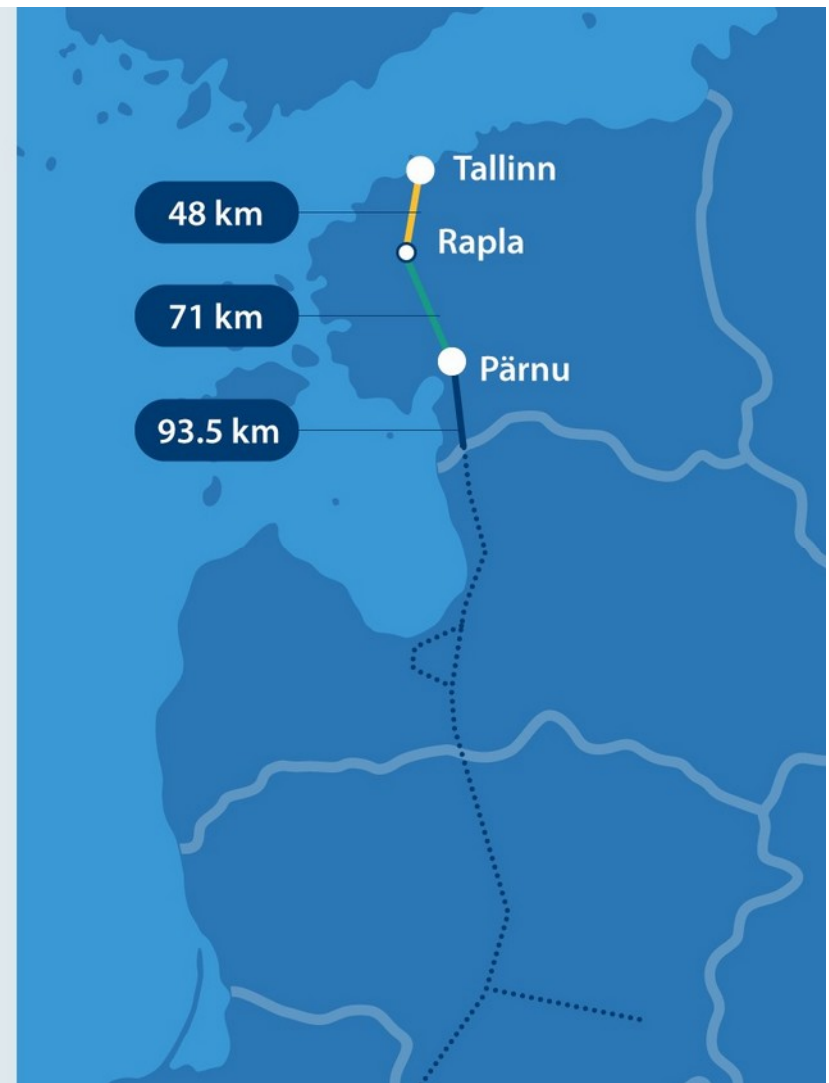
24  
railway  
viaducts



40  
road  
viaducts



24  
ecoducts





# Detailed Technical Design in Latvia

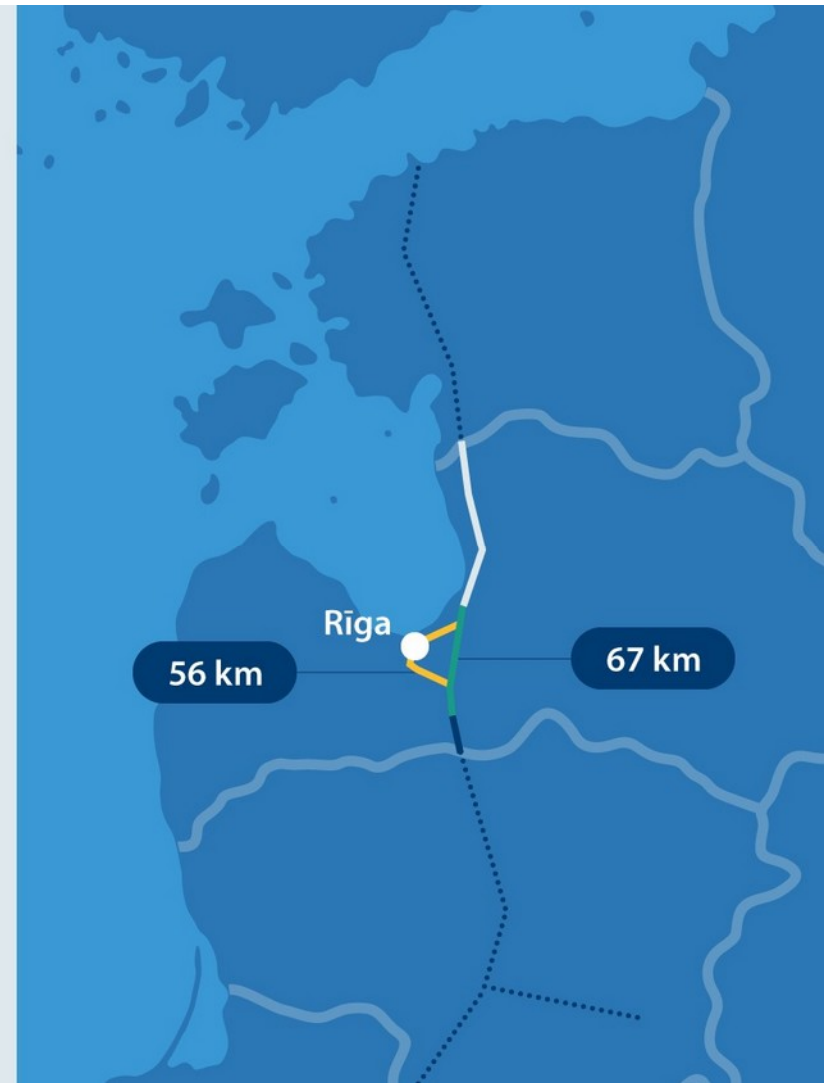


## Sections:

-  Riga Central Section
-  Vangaži to Misa
-  Estonian/Latvian boarder – Vangaži
-  Misa – Latvian/Lithuanian border

## Indicative scope of works:

- |   |  |  |
|---|--|--|
|  <b>32</b><br>bridges   |  <b>43</b><br>railway viaducts                 |  <b>82</b><br>road viaducts |
|  <b>10</b><br>ecoducts |  <b>13</b><br>segregated pedestrian crossings |  <b>1</b><br>tunnel        |



# Detailed Technical Design in Lithuania



## Sections:

-  Ramygala to Lithuanian/Latvian state border
-  Ramygala to Kaunas

## Indicative scope of works:



7  
bridges



31  
railway  
viaducts



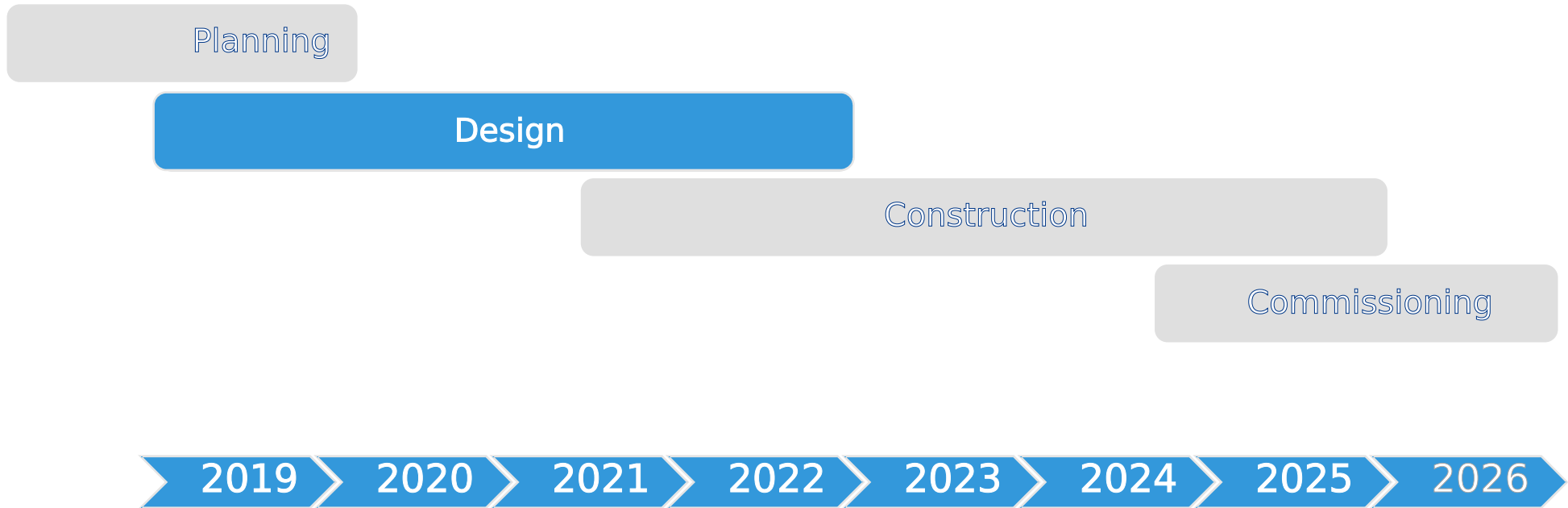
21  
road  
viaducts

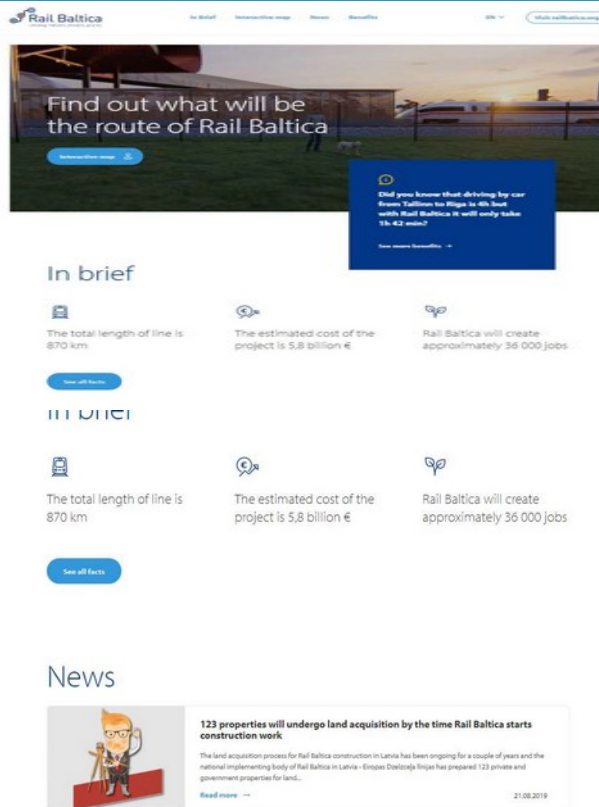


7  
ecoducts



# Project Timeline by Phases





Find out what will be the route of Rail Baltica

Did you know that driving by car from Tallinn to Riga in 4h. Just with Rail Baltica it will only take 1h. 42 min.?

### In brief

- The total length of line is 870 km
- The estimated cost of the project is 5,8 billion €
- Rail Baltica will create approximately 36 000 jobs

### News

**123 properties will undergo land acquisition by the time Rail Baltica starts construction work**

The land acquisition process for Rail Baltica construction in Latvia has been ongoing for a couple of years and the national implementing body of Rail Baltica in Latvia - Eņģeļu Drošības Būvniecība has prepared 123 private and government properties for land...

Read more -- 21.08.2019

- Interactive map of the Rail Baltica track developed with explanations about status in each section
- Info provided in 4 languages
- Digital and social media campaign conducted
- Almost 4 million people reached in the Baltic States

Thank you for your attention!



info@railbaltica.org



www.railbaltica.org



K. Valdemara iela 8-7, Riga, Latvia



+ 371 66 967 171



linkedin.com/company/rb-rail